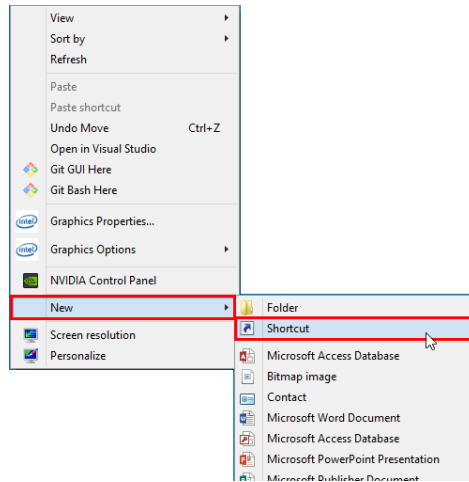


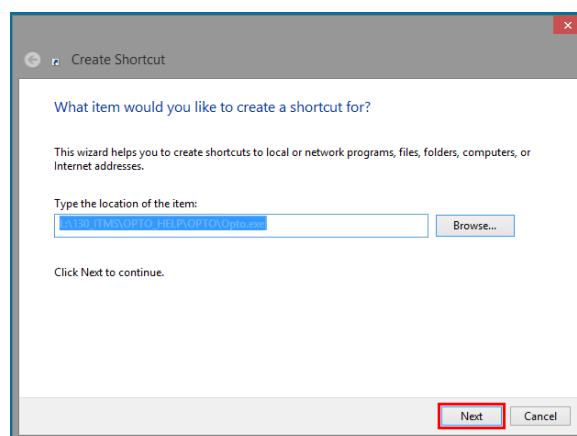
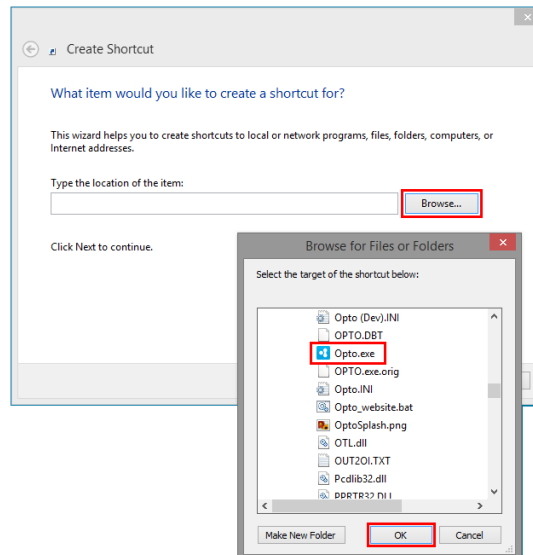
## 2014-120 - Workstation Set-up Procedure for OPTO v9.4 Client Installation and Registration of SRP

**New Install – A desktop shortcut needs to be created before this procedure can be run.**

To create a shortcut – on your desktop, **right-mouse-click** and select 'New' from the list and then 'Shortcut' from the extended list.

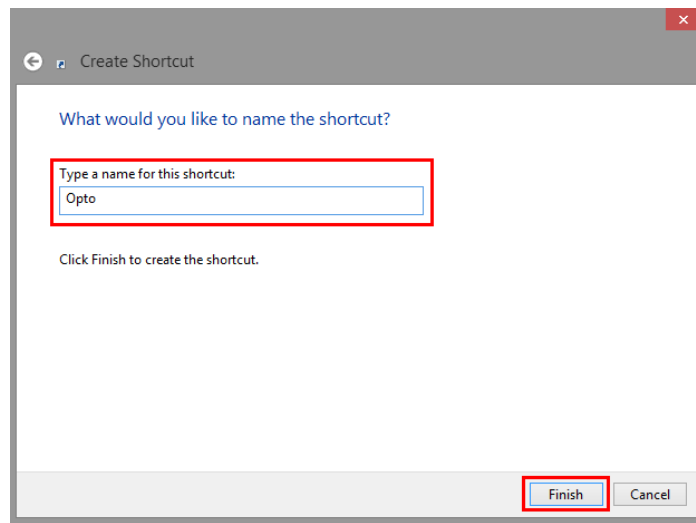


**Click** on the **Browse** button and navigate to Opto.exe, then **click OK**.



**Click** on the **Next** button.

Enter the name for the shortcut and then **click** on the **Finish** button.

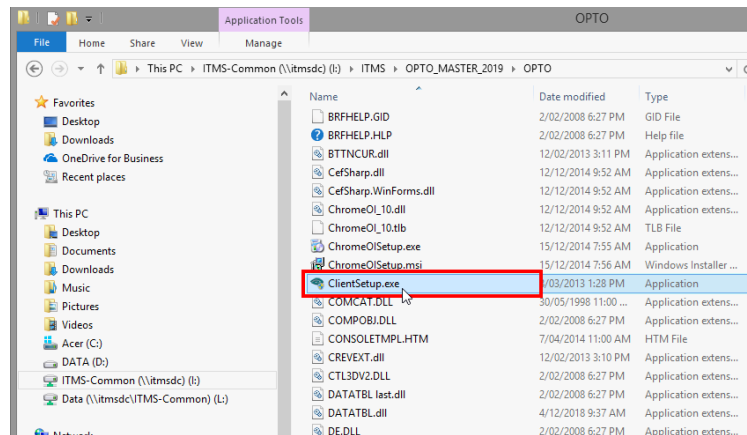


You now have a desktop shortcut to OPTO.

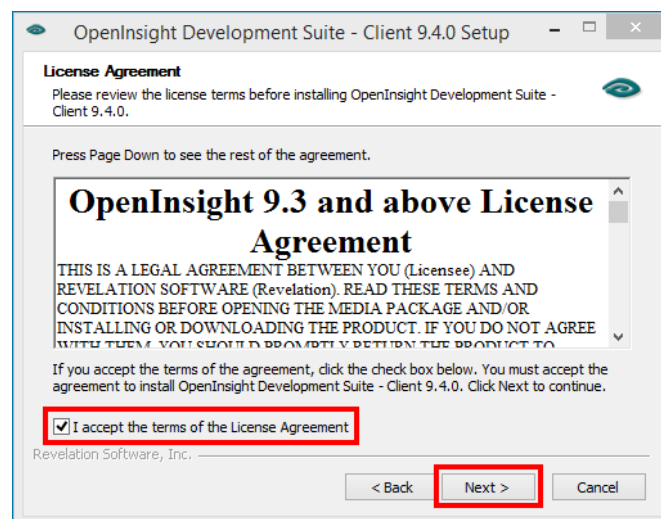


**IMPORTANT NOTE: This procedure MUST be completed on every PC running OPTO and requires local administrator rights for successful installation.**

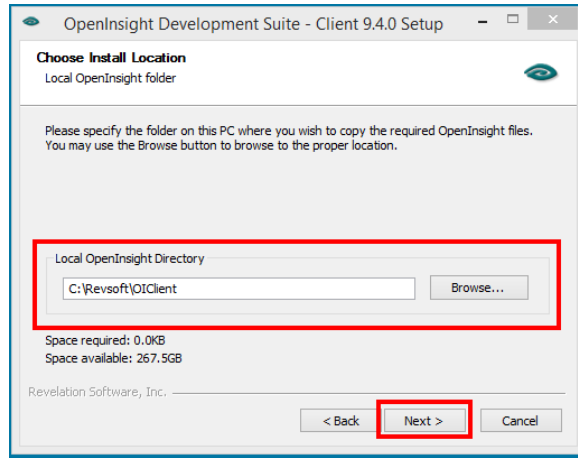
**Step 1. Client Install Setup** - OPTO MUST NOT be open/logged onto on the PC during this installation process. Go to where the OPTO icon on your desktop then right mouse button and select open file location. Scroll down until you find the ClientSetup.exe, **dbl-click** on it to commence the installation procedure.



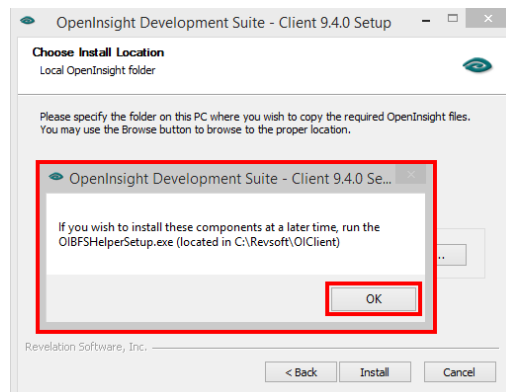
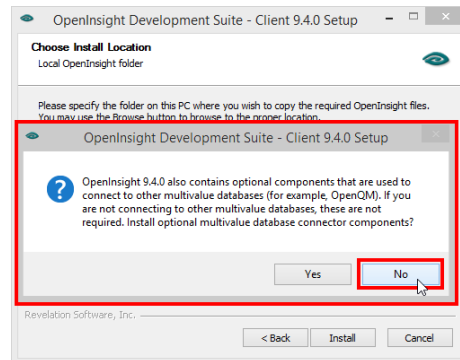
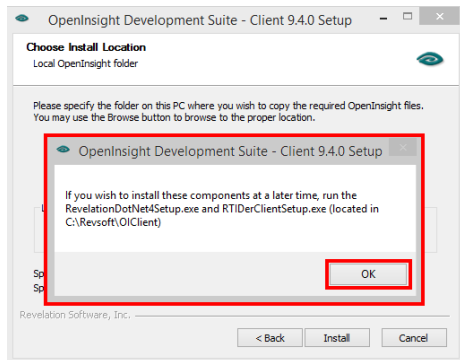
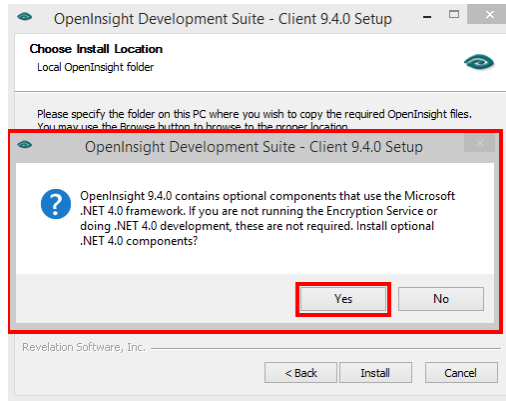
**Click** on the **Next** button on the welcome window. On the 'Licence Agreement' window **click** on the box (circled below) to accept the terms and then **click** on the **Next** button.



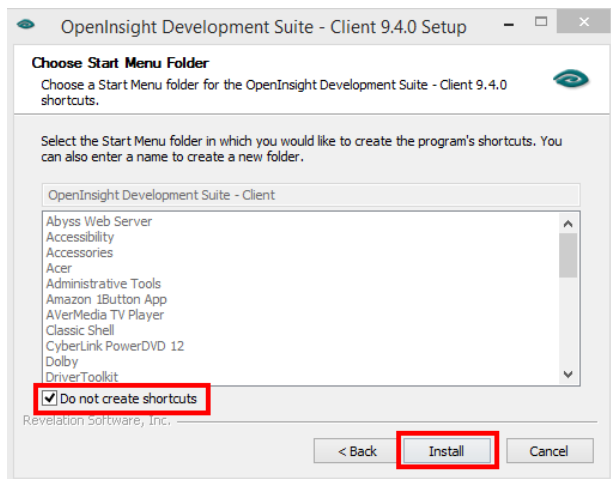
**Choose Install Location** - Click on the **Browse** button to locate the Revsoft folder on your system, **dbl-click** on the Revsoft folder to open. **Click** on the 'OIClient' folder to highlight and then **click** on the **OK** button and then **click** on the **Next** button. **Please note:** The drive location in the picture below is for illustration purposes only, the Revsoft folder may be located on a different letter drive on your system.



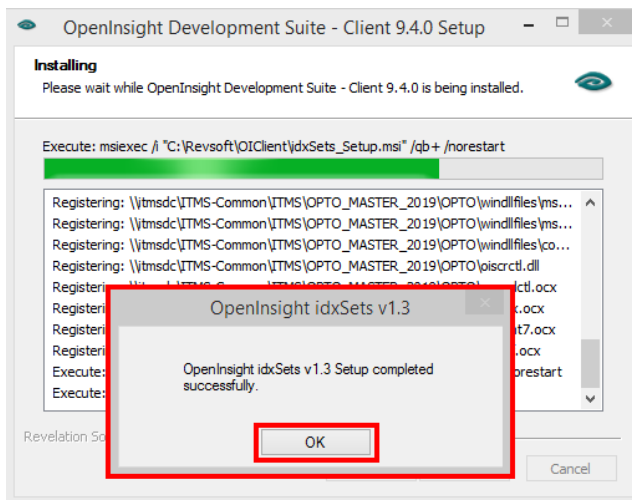
Several popup messages appear during the installation, follow the steps shown below.



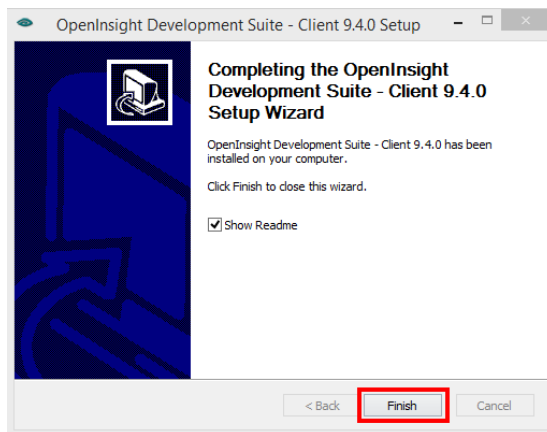
**Choose Start Menu Folder** – This is automatically chosen by the Install process. Click on the **Install** button. Ensure that the “Do not create shortcuts” box **is ticked**.



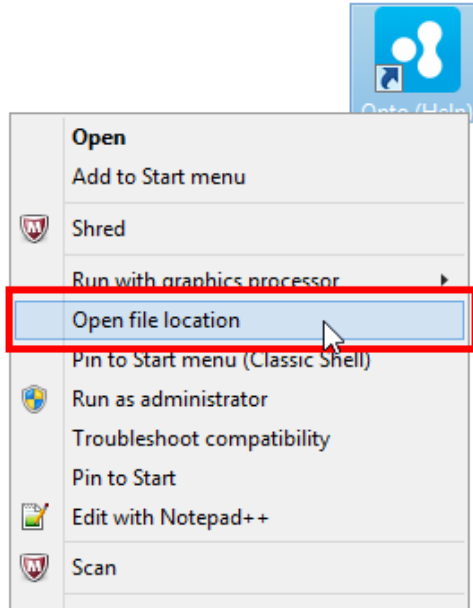
Final Installation begins.



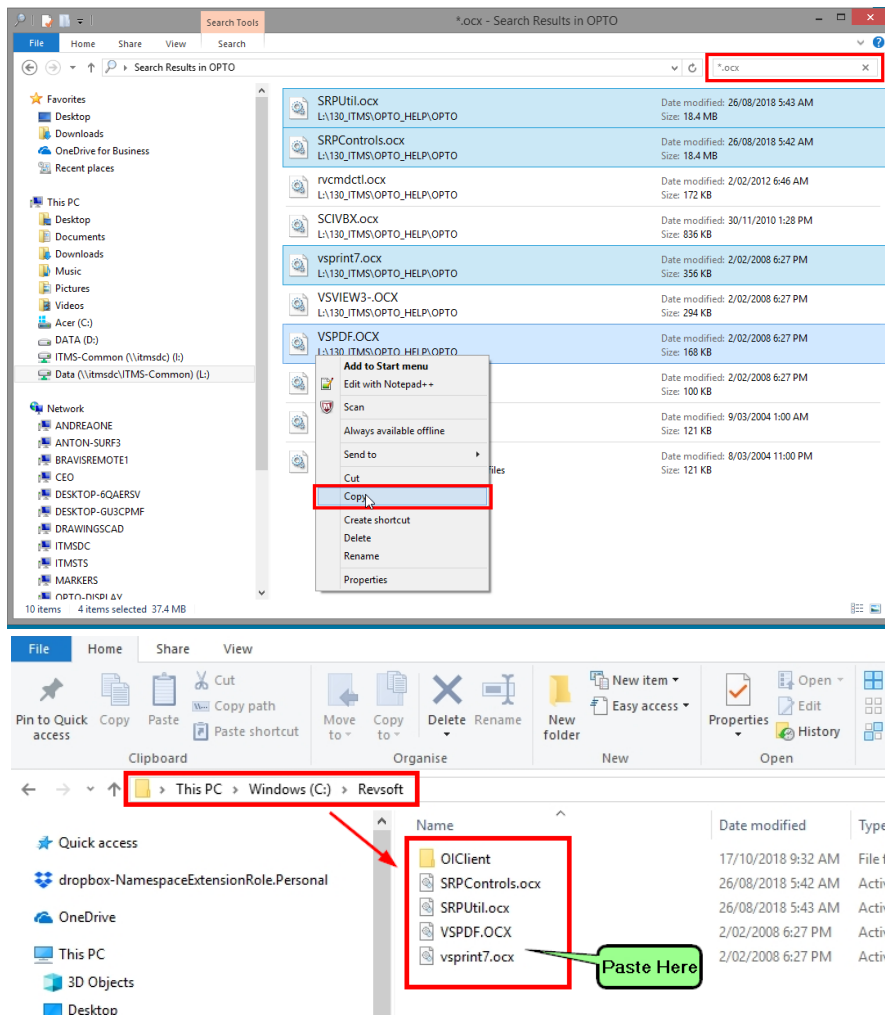
Several pop-up messages may appear, **click** on **OK** to all, ensuring they advise that the ‘Setup completed successfully’. If any of the messages say the Setup failed, then contact your IT Administrator as you may not have the correct permissions to run this procedure. **Click** on the **Finish** button of the Completing Setup window.



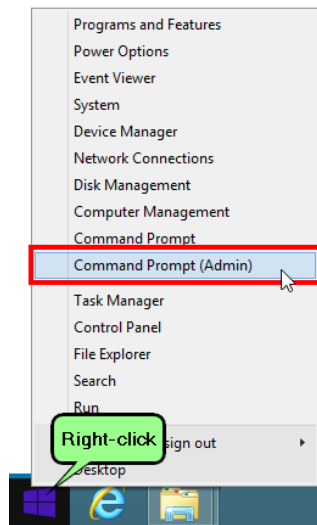
**Step 2. Register SRP files – Right-click** on the OPTO icon on the Desktop of the PC and select “Open File Location”.



Search ‘\*.ocx’ to find the SRP files to be registered in each client computer. Select the files as illustrated below, and **copy** into the C:\Revsoft folder in the C Drive of the Computer (shown below).



To register these \*.ocx files, **right-click** on the Windows start icon shown below, and select 'Command Prompt (Admin)' from the list (as below)

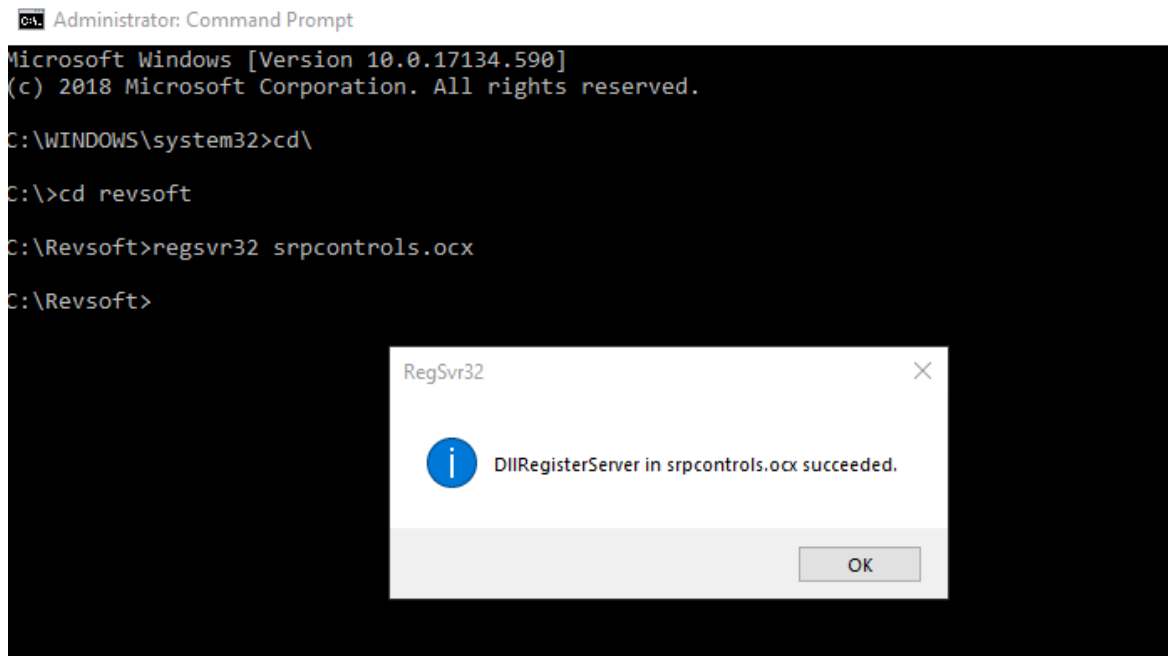


Each Client install must have the 'srpcontrols.ocx' registered, the other ocx are only required to be registered on the server and or the OPTO Power User's Computer.

The process must be as below:

```
cd\  
cd revsoft  
regsvr32 srpcontols.ocx
```

If successful, the popup will show as below



Only register these \*.ocx file on the server or Power User Computer

